



ESL Alppila

18 800 DWT Open hatch bulk carrier

GENERAL

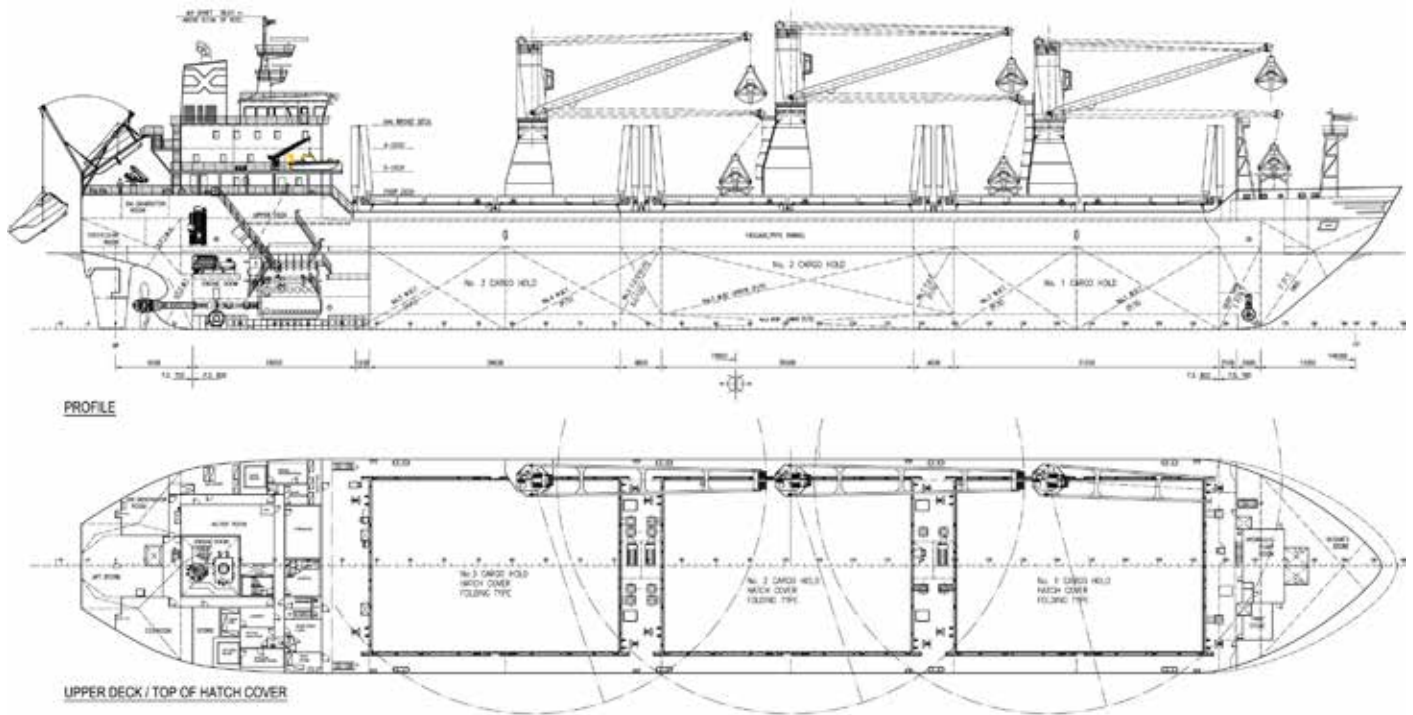
The FKAB G13 is a general cargo carrier designed for carrying all type of general cargoes as well as pure bulk cargos. The vessel is arranged with three cargo holds and designed for worldwide service. Furthermore the vessel complies with St Lawrence Regulations.

The cargo area is protected with double bottom underneath and wing tanks at sides. Top of the holds is covered with foldable hatch covers.

The propulsion system consists of one low speed diesel engine (HFO/MDO) directly connected to a controllable pitch propeller. An electrically driven bow thruster takes its power from existing diesel generators/shaft generators.

MAIN FIGURES

Cargo hold capacity	23 500 m ³
Deadweight at summer draught	tonnes
Cargo cranes	3 x 30 tonnes/12.5 m ³ grab
Number of holds	3



MAIN PARTICULARS

Length over all	155.4 m	Distributed loads:	
Length between PP	146.0 m	On tank top	14.48 tonnes/m ²
Breadth mld	25.2 m	Main engine	8 060 kW
Depth mld	12.8 m	CP propeller	Ø 5.6 m
Draught design	9.0 m	Aux engines	3 x 900 kW
Draught scantling	9.39 m	Shaft generator	840 kW
Deadweight design draught	18 800 tonnes	Bow thruster	600 kW
Cargo capacity	22 925 m ³	Stern thruster	600 kW
HFO tanks	1 105 m ³	Cargo grab cranes	3 x 30 tonnes/12.5 m ³ grab
DO tanks	115 m ³	Ballast pumps	3 x 30 tonnes/28 m
FW tanks	140 m ³	Accommodation	17 pers
Water ballast	8 960 m ³	Speed (9.0 m) 85% MCR	14.5 knots

CLASS

Lloyd's Register: ✱ 100A1, Bulk carrier strengthened for heavy cargoes, one cargo hold may be empty, ESP, ✱ LMC, UMS, SCM, IWS, NAVI and Ice Class 1AS. Finnish Ice Class 1A Super.

NO. OF BUILT VESSELS	YARD	OWNER	FLAG	DELIVERY YEAR	SCOPE
2	ABG shipyard, India	Finnish	Finnish	2008-2009	Concept and Basic Design